

ATTACHMENT B

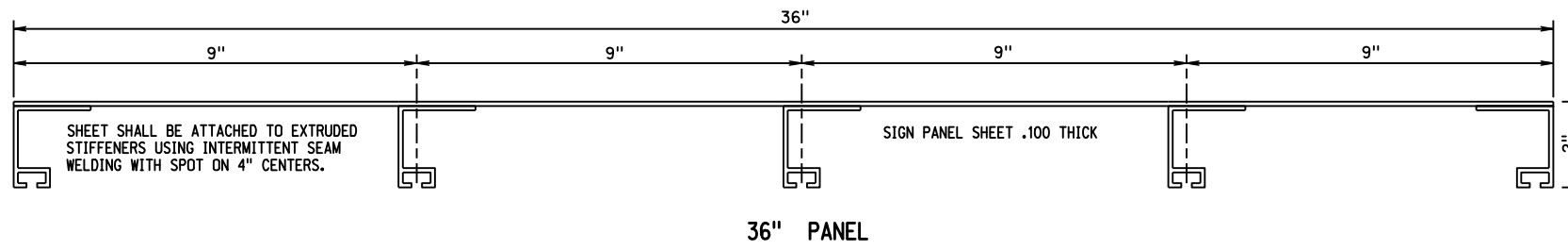
TRAFFIC ENGINEERING DIVISION

Computer: DRTRAFFIC16

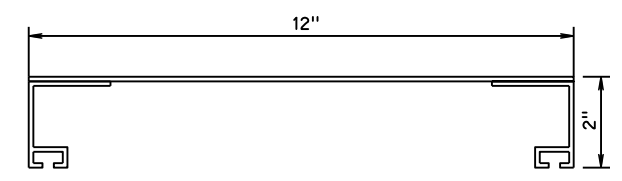
User: dor2029

Date: 21-JUL-2016 09:28

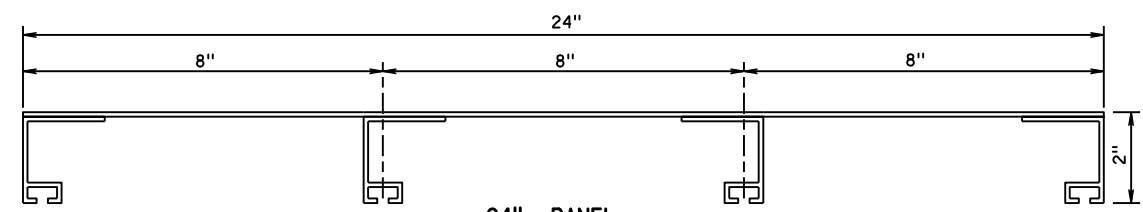
File: yalum.dgn
Scale: 1:200



36" PANEL

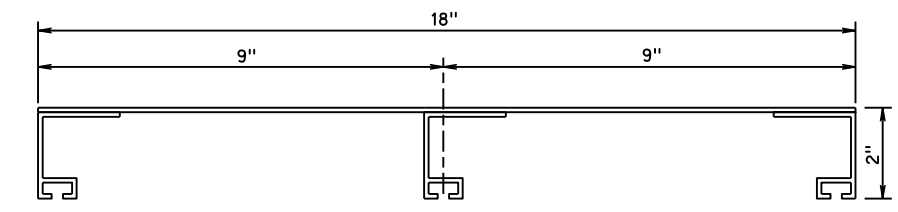


12" PANEL



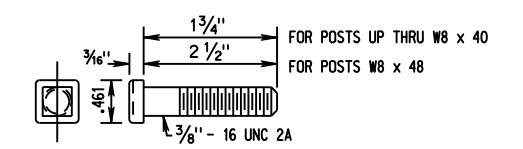
24" PANEL

ALUMINUM SPECIFICATIONS:
FLAT SHEETS-ALLOY 3003-H18 OR 5052-H38 (ASTM B209)
EXTRUDED STIFFENERS-ALLOY 6063-T6 (ASTM B221)

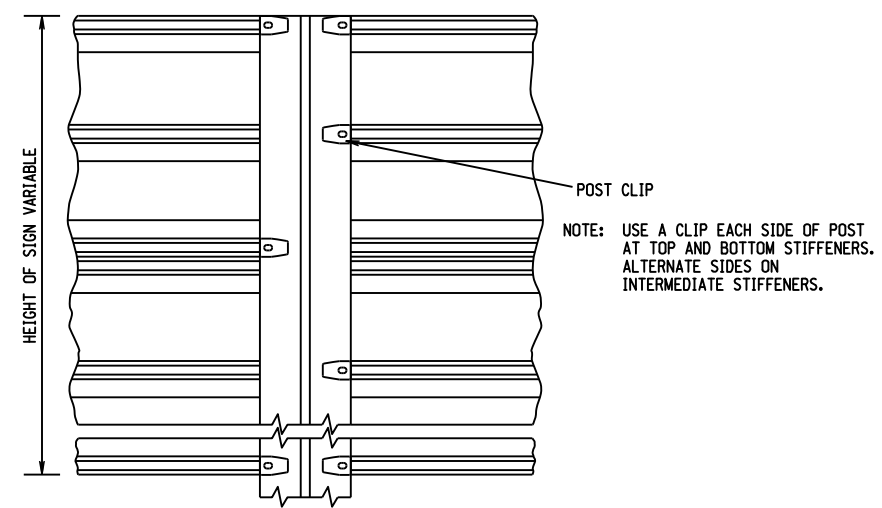


18" PANEL

EXTRUSHEET PANEL WIDTHS
(MOLDED EXTRUDED PANELS MAY BE SUBMITTED AS AN ALTERNATE TO EXTRUSHEET PANELS)



POST CLIP BOLT



TYPICAL MOUNTING FOR EXTRUSHEET SIGN PANEL

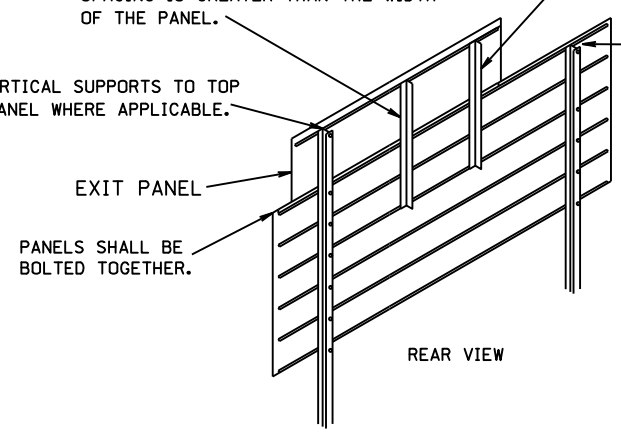
NOTE: USE ALUMINUM ANGLES FOR SUPPORTING EXIT PANEL WHEN VERTICAL SUPPORT SPACING IS GREATER THAN THE WIDTH OF THE PANEL.

● ALUMINUM \angle 1 1/2" x 1 1/2" x .188" x 4"
OVERHANG: MIN 12", MAX 15".
SPACE BETWEEN CENTERS: MIN 24", MAX 30".

EXTEND VERTICAL SUPPORTS TO TOP OF EXIT PANEL WHERE APPLICABLE.

PANELS SHALL BE BOLTED TOGETHER.

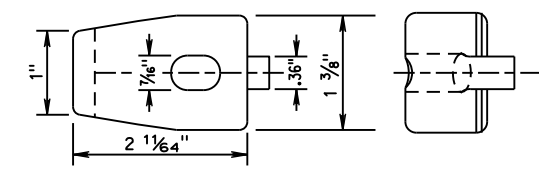
ALL SIGN SUPPORTS SHALL BE CUT OFF FLUSH WITH THE TOP OF THE SIGN.



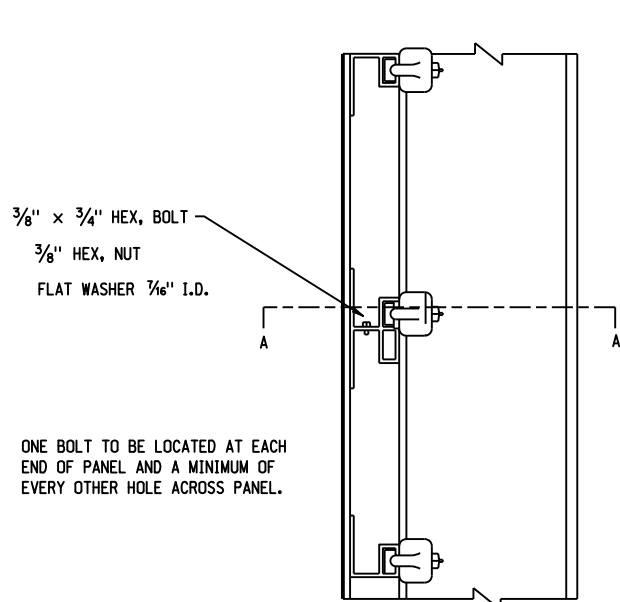
MOUNTING DETAILS FOR EXIT PANEL

● AN ALUMINUM ANGLE, 1 1/2 INCH x 1 1/2 INCH x 0.188 INCH THICK FOR USE WITH EXTRUSHEET AND EXTRUDED SIGN BRACKETS ON WOOD POSTS, SHALL BE ALLOY 6061-T6 COMPLYING WITH ASTM B 308.

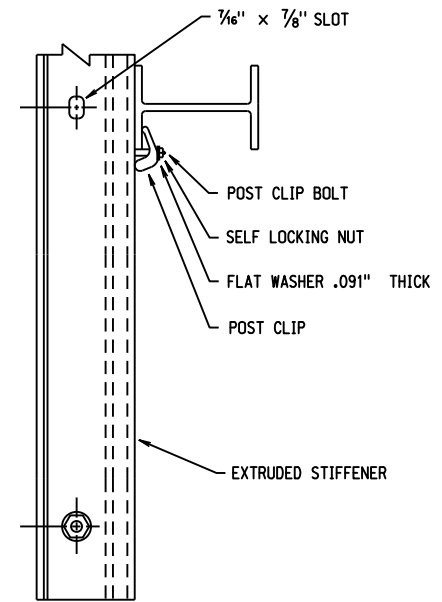
* POSTS CLIPS SHALL BE ALUMINUM ALLOY 356.0 CONFORMING TO ASTM B 108. POST CLIPS AND SIGN BRACKET BOLTS SHALL BE ALUMINUM ALLOY 2024-T4 CONFORMING TO ASTM B 211. LOCKNUTS FOR ALUMINUM BOLTS SHALL BE ALUMINUM ALLOY 2017-T4 CONFORMING TO ASTM B 211.



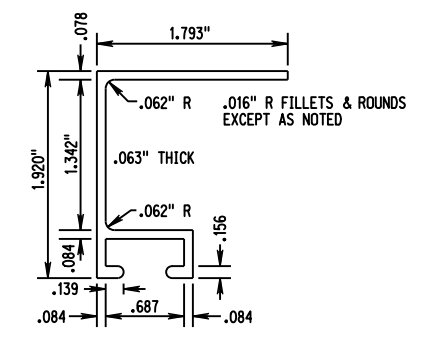
* POST CLIP



END VIEW



SECTION "A-A"



EXTRUDED SIGN BRACKET

NEBRASKA DEPARTMENT OF ROADS TRAFFIC ENGINEERING DIVISION			
SIGN DESIGN DETAILS			
DESIGNED	KSF	FABRICATION & MOUNTING DETAILS	
REVIEWED		TYPE "B" & "C" GUIDE SIGN PANELS	
APPROVED	DATE DRAWN	TRAFFIC ENGINEER	DATE

